

MODEL NO. : LCD-705

 SPECIFICATION

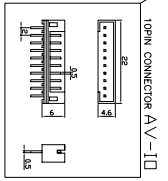
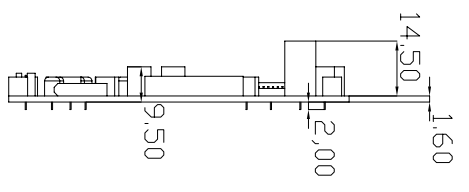
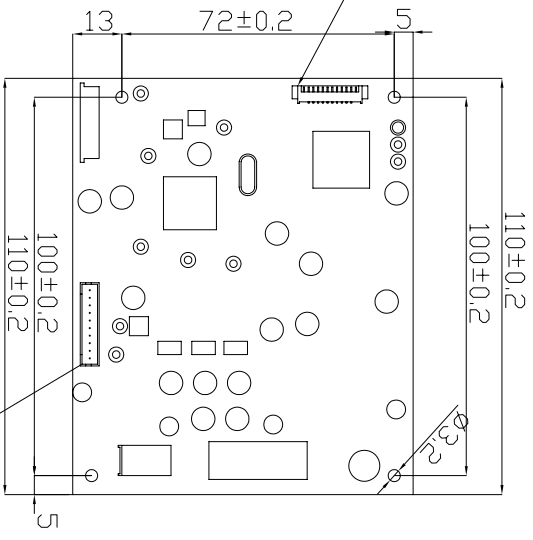
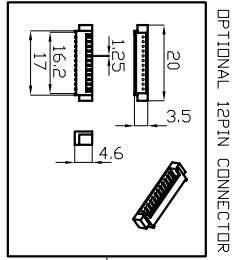
<p>◆ DISPLAY SCREEN</p> <p>◆ VIDEO SYSTEM</p> <p style="margin-left: 20px;">NTSC f_H : 15.75 KHz f_V : 60 Hz f_C : 3.58 MHz</p> <p>◆ POWER SOURCE</p> <p>◆ POWER CONSUMPTION</p> <p>◆ OPERATING TEMPERATURE</p> <p>◆ STORAGE TEMPERATURE</p> <p>◆ LCD SCREEN</p> <p>◆ DRIVER BOARD</p> <p>◆ BRIGHTNESS</p> <p>◆ CONTRAST</p> <p>◆ VIEWING ANGLE</p> <p>◆ WEIGHT</p>	<p>SCREEN SIZE 7" LCD SCREEN</p> <p>ACTIVE AREA 154.08(W) x 86.58(V)mm</p> <p>ELEMENT COLOR TFT LCD</p> <p>RESOLUTION 1440(W)x234(H)</p> <p>DOT PITCH 0.107(W) x 0.370 (H)</p> <p>NTSC & PAL Dual System</p> <p>PAL f_H : 15.625 KHz f_V : 50 Hz f_C : 4.43 MHz</p> <p>DC 12 V</p> <p>417 mA 5W Max.</p> <p>30°C ~ 85°C</p> <p>-40°C ~ 95°C</p> <p>164.9 (W)x100.0(H)x5.7(D) (mm)</p> <p>100.0(W) x 72.0 (H) X 14.5 (D)</p> <p>500 nit</p> <p>300:1</p> <p>Vertical + 10° / - 30° Horizontal ± 45° .</p> <p>160 ± 10 g</p>
---	--

 FEATURES

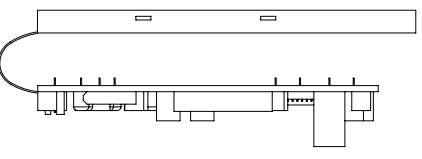
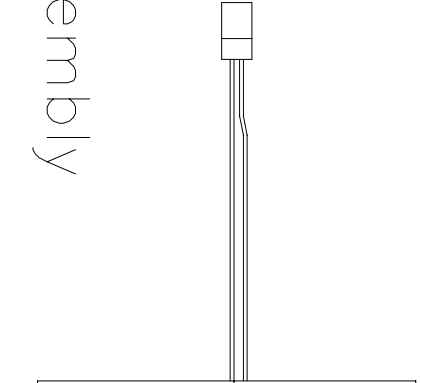
1. Video Input
2. LEFT & RIGHT, UP/DOWN Reverse Image
3. Low Power Consumption.
4. 12V Drive for handheld , Battery operated items

1	2	3	4	5	6	7	8
REVISION							
ISSUE ZONE	DESCRIPTION	DATE	REVISER				

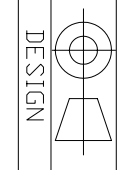
Driver Board



Assembly



VIEWTEK®
LEE MING INDUSTRIAL CO., LTD

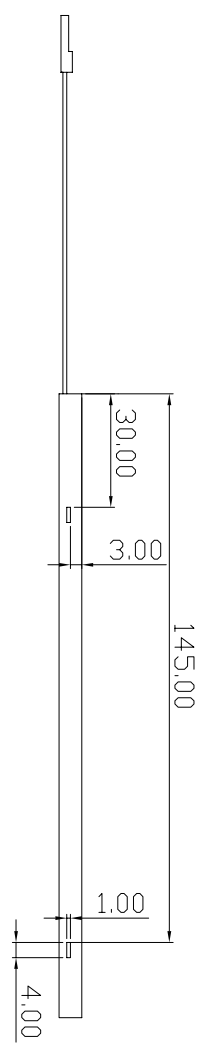
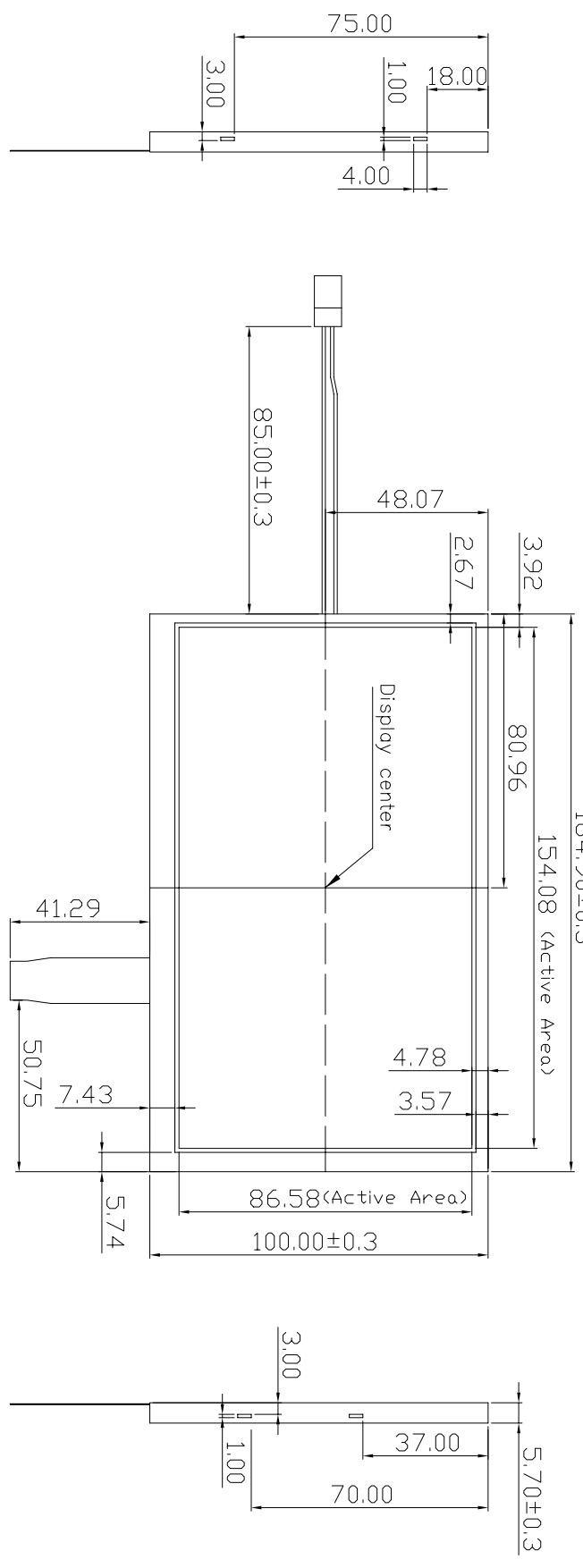
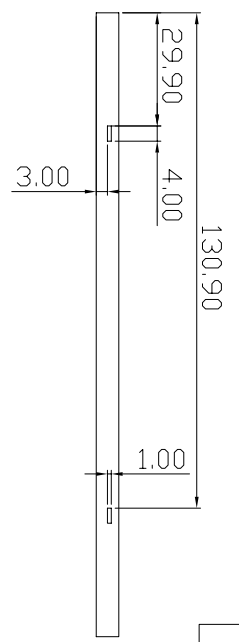


MODEL NO.	PARTS NO.	DWG. DATE	MATERIAL	UNIT	PARTS NAME
LCD-705		2006/07/26		mm	PCB&Assembly
CHECKED	APPROVED	REV. DATE	SCALE	REV	FILE NO.
			FREE		DRAWING NO.

1 2 3 4 5 6 7 8

REVISION			
ISSUE ZONE	DESCRIPTION	DATE	REVISER

LCD Screen



VIEWTEK®		DESIGN		MODEL NO.	PARTS NO.	DWG. DATE	MATERIAL	UNIT	PARTS NAME
LEE MING INDUSTRIAL CO., LTD		CHECKED		LCD-705	0700107-Pn1	2006/07/26	SCALE	mm	7" PANEL
					APPROVED		FREE	REV	DRAWING NO.
1	2	3	4	5	6	7	8		

