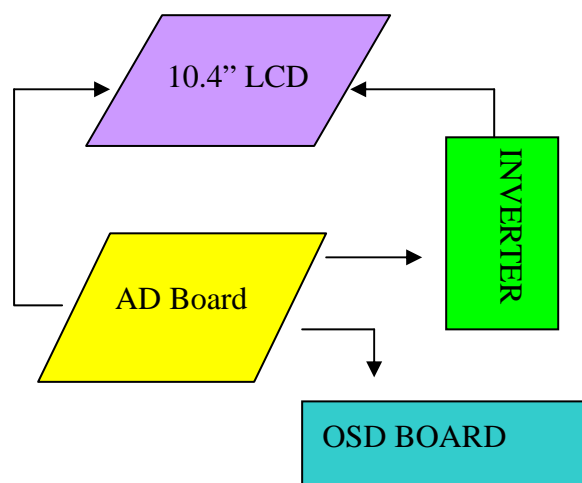


MODEL NO. : LM-1053

□ SPECIFICATION □

DISPLAY SCREEN	SIZE	10.4 INCH
	Active Area	211.2(W)x158.4 mm(H)
	ELEMENT	COLOR TFT LCD
	RESOLUTION	800 x 600
	DOT PITCH	0.264 (W) x 0.264 (H)mm
◆ POWER SOURCE	DC 12V	
◆ POWER CONSUMPTION	10W Typ.	
◆ OPERATING TEMPERATURE	0°C ~ 50°C	
◆ STORAGE TEMPERATURE	-20°C ~ 60°C	
◆ BRIGHTNESS	230 cd/m ²	
◆ CONTRAST	500 : 1	
◆ OPTICAL RISE TIME/FALL TIME	10/25 Typ.	
◆ VIEWING ANGLE	Vertical +35° /-65° , Horizontal : ± 60°	
◆ PC INPUT	RGB Analogue Input 15Pin D-sub x 1	
◆ VIDEO INPUT	1Vpp 75 Ω , RCA x 1,S-Video x 1.	
◆ PLUG & PLAY	VESA DDC2B	
◆ GREEN FUNCTION	VESA DPMS	
◆ OSD CONTROL FUNCTION	Brightness, Contrast, Color, Volume, Mute	
◆ LCD SCREEN	285.0 x 165.0 x 39.0 (mm)	
◆ WEIGHT	280 ±10g	

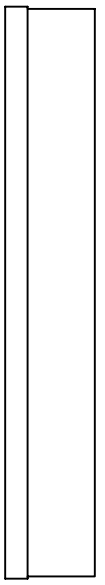
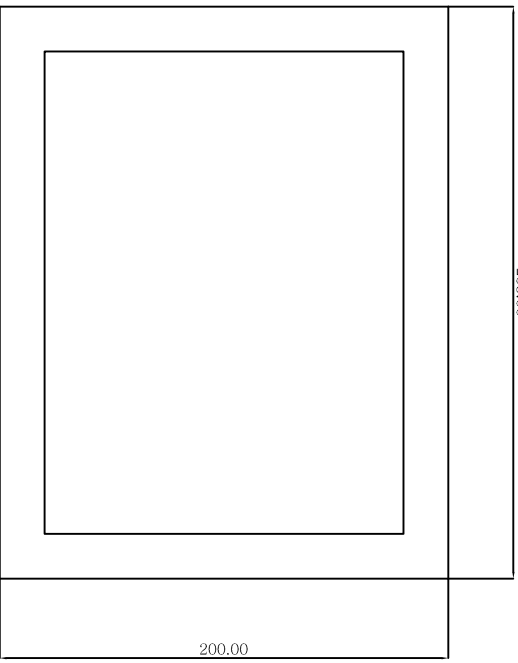
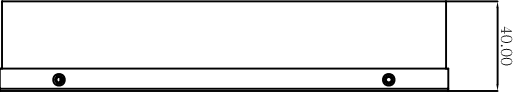
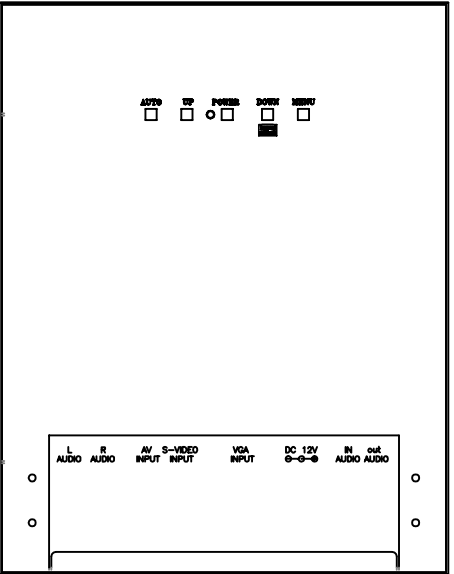
□ CONNECTION □



VGA SUPPORT MODE

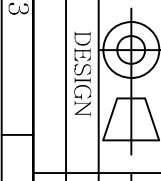
Resolution	Horiz. Freq.(KHz)	Vert. Freq.(Hz)	Polarity
640X350	31.46	70	+/-
	37.86	85	+/-
720X350	31.46	70	+/-
	37.86	85	+/-
640X400	31.46	70	-/+
	37.93	85	-/+
	24.82	56	-/+
720X400	31.46	70	-/+
	37.86	85	-/+
640X480	31.46	59.9	-/-
	35.00	66.6	+/-
	37.86	72.8	-/-
	37.50	75.0	-/-
	43.27	85.0	-/-
800X600	35.15	56.2	+/+
	37.87	60.3	+/+
	48.07	72.2	+/+
	46.87	75.0	+/+
	44.40	70.0	+/+
	53.67	85.0	+/+
832X624	49.72	74.5	-/-
1024X768	48.36	60.0	-/-
	56.47	70.1	-/-
	58.08	72.9	
	60.02	75.0	+/+
	68.68	84.9	+/+
1152X864	54.90	60.0	
	64.19	70.2	+/+
	67.50	75.0	-/-
	76.30	80.0	
	77.09	84.9	
1280X1024	64.60	59.9	+/+
	63.98	60.0	-/-
	74.40	59.3	
	78.72	74.0	
	79.97	75.0	

REVISION			
ISSUE ZONE	DESCRIPTION	DATE	REVISER



1 2 3 4 5 6 7 8

VIEWTEK[®]
LBE MING INDUSTRIAL CO.,LTD



MODEL NO.	PARTS NO.	DWG.DATE	MATERIAL	UNIT	PARTS NAME
LM-1053		2006/11/20		mm	Line Drawing"
CHECKED	APPROVED	REV.DATE	SCALE	REV	FILE NO.
			FREE		DRAWING NO.

1 2 3 4 5 6 7 8